



62 Mirabelle Way

Harworth, Doncaster, DN11 8DA

Asking Price £155,000

An immaculate 3 bedroom modern semi-detached property on a popular residential development located on the outskirts of Harworth. An array of amenities are located closeby including, superstores, shops, cafes and schools aswell as proximity to the A1 motorway connections. The accommodation comprises: hall, cloaks/wc, lounge with understairs storage, pleasant kitchen/diner with space for table and French doors to nice size garden, landing with airing cupboard, master bedroom with ensuite shower room, two further bedrooms and a family bathroom with extra shower over the bath. Outside there is parking for 2 cars and enclosed rear garden laid to lawn with patio. This ready to move into property should be ideal for a first time buy.

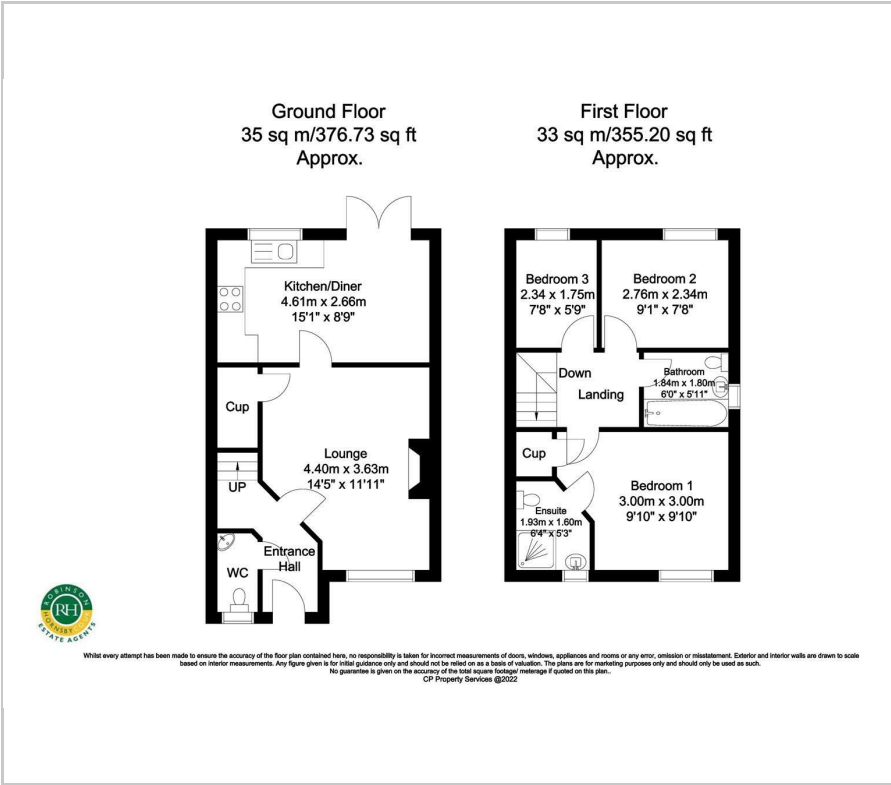
- Immaculate 3 bedroom semi-detached
- Cloaks/wc
- Lounge with storage
- Kitchen/diner with french doors to rear
- Master with ensuite shower
- Bathroom with shower over bath
- Parking for 2 cars
- Enclosed gardens with lawn and patio
- Easy access to nearby Bawtry and its amenities
- Village facilities within Harworth

Viewing

Please contact our Office on 01302 751616 if you wish to arrange a viewing appointment for this property or require further information.



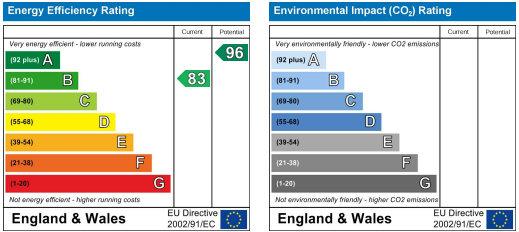
Floor Plan



Area Map



Energy Efficiency Graph



These particulars, whilst believed to be accurate are set out as a general outline only for guidance and do not constitute any part of an offer or contract. Intending purchasers should not rely on them as statements of representation of fact, but must satisfy themselves by inspection or otherwise as to their accuracy. No person in this firms employment has the authority to make or give any representation or warranty in respect of the property.